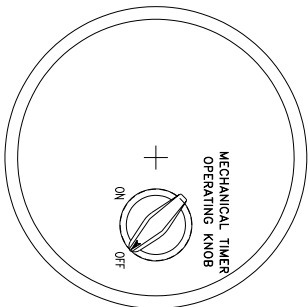
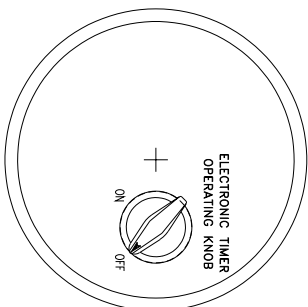


PLAN VIEW (with Switch)



PLAN VIEW (with Mechanical Timer)



PLAN VIEW (with Electronic Timer)

- Reference IS/IEC Standard as follows :
- 1 - FLAMEPROOF (Ex d) PROTECTION - IIA & IIB, IS/IEC 60079-1 (2014)
 - TEMPERATURE CLASS - T6
 - 2 - INGRESS (IP) PROTECTION - IP-66, IS/IEC 60529 (2001). (Reaffirmed 2014)

Standard Specification :

- 1 - MATERIAL - CAST ALUMINIUM ALLOY
- 2 - FINISH - INSIDE & OUTSIDE LIGHT GREY EPOXY POWDER COATING SHADE No. 631 AS PER IS-5
- 3 - EARTHING - 1 No. INSIDE & 2 Nos. OUTSIDE M6 SIZE S.S./BRASS SCREWS WITH 2 Nos. PLAIN WASHER
- 4 - HARDWARE - STAINLESS STEEL
- 5 - GASKET - 'O' RING ENDLESS NEOPRENE RUBBER GASKET
- 6 - MOUNTING ARRGT. - AS SHOWN IN DRG.

Material / Components Specification :

- 1 - S.S. NAME CUM WARNING PLATE (WITH DESCRIPTION TITLE, CIMFR, PESO, SR. NO., GAS GROUP, RATING, BIS MARKING, WARNING STATUS, etc...)
- 2 - GLASS - HEAT RESISTANCE CLEAR TOUGHENED GLASS 'TYPE-A' OF 'SUDHIR' BRAND
- 3 - CABLE ENTRIES - 2 Nos. M20 / 1/2" NPT / 3/4" ET SIZE CABLE ENTRIES FROM SIDE (REFER DRAWING)
- 4 - SWITCH - 1 No. 6 Amp. SP/DP (ON-OFF) SELECTOR SWITCH OF 'RECOM/KANGEE/SULZER' MAKE

Light Fitting Standard Specification :

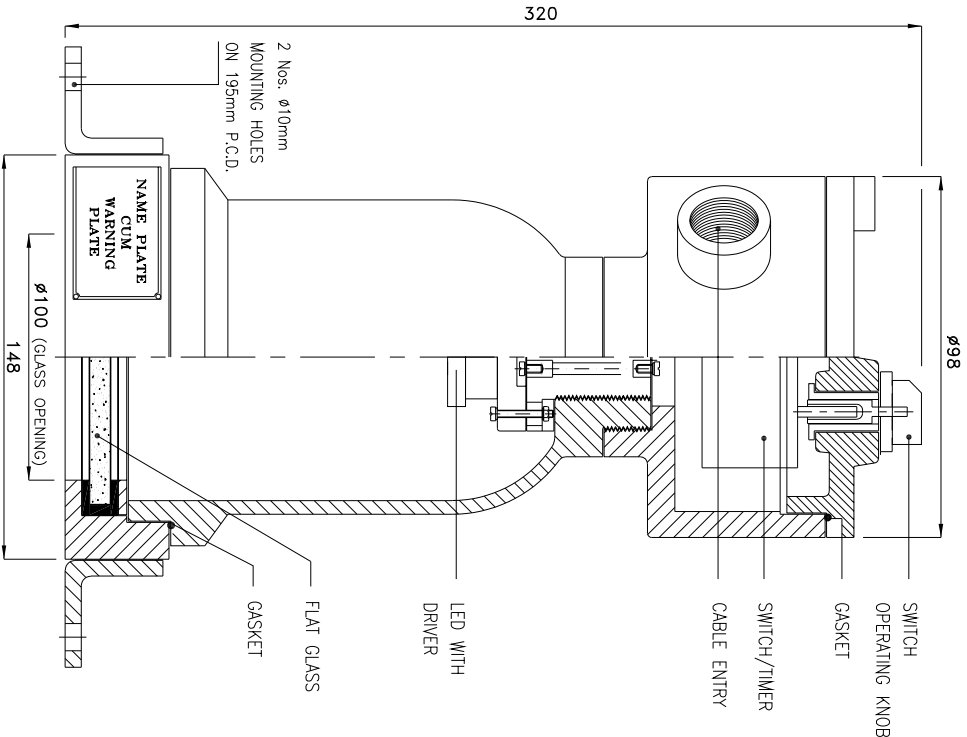
- a) WATTAGE : 15 WATTS
- b) VOLTAGE : 140V-270V AC
- c) POWER FACTOR : >0.95
- d) INPUT FREQUENCY : 50 HZ
- e) EFFICACY : ≥100 LUMEN PER WATT
- f) COLOUR (CCT) : 3000K/5700K/6500K/0R AS SPECIFIED
- g) CRI : ≥80 RA
- h) TOTAL HARMONIC DISTORTION : ≤ 10% THD
- i) SURGE PROTECTION : 10 KV SPD
- j) SURFACE TEMPERATURE : MAX. 70°

Light Fitting OPTIONS :

- 1) MATERIAL CONSTRUCTION : STAINLESS STEEL
- 2) VOLTAGE : 220V DC/110V AC/110V DC/24V AC
- 3) GLASS TYPE : FLAT
- 4) LED MAKE : CITIZEN/OSRAM/BRIDGELUX/EQUIVALENT
- 5) DRIVER MAKE : OSRAM/PHILIPS/FULHAM/EQUIVALENT
- 6) CABLE GLAND & PLUG : BRASS/S.S./ALUMINIUM
- 7) WIRE GUARD : M.S. WHITE EPOXY POWDER COATED / S.S.
- 8) TIMER : ELECTRONIC / MECHANICAL OPERATED TYPE

NOTE :

- COMPONENT LAYOUT IS TENTATIVE RELOCATION OF PARTS & COMPONENTS IS POSSIBLE AT THE TIME OF ACTUAL MANUFACTURING.
- OVERALL DIMENSIONS ARE ±10mm



REV.		DATE	DESCRIPTION	DRN.	CHD.	APP.	SCALE	CAT. No.	REV./A/128
Δ								Model No. RVL/128/15	
Δ								DRN. JMSHW	
Δ								APP. 1 OF 1	
Δ								N. T. S. REV.-0	
<p>SUDHIR SWITCHGEARS PVT. LTD. 130, MUMBAI SAMACHAR MARG, MUMBAI - 400 023</p> <p>TITLE : FLAMEPROOF-WEATHERPROOF ENCLOSURE SUITABLE FOR REACTOR VESSEL LAMP WITH SWITCH</p> <p>DRN. CERT. No. IN/CIMFR/TR22/R/H155</p> <p>PESO No. : P546043/1</p> <p>BIS LICENCE No. : CM/L-0003331365</p> <p>Di. 15/07/2022</p> <p>Di. 30/09/2022</p>									